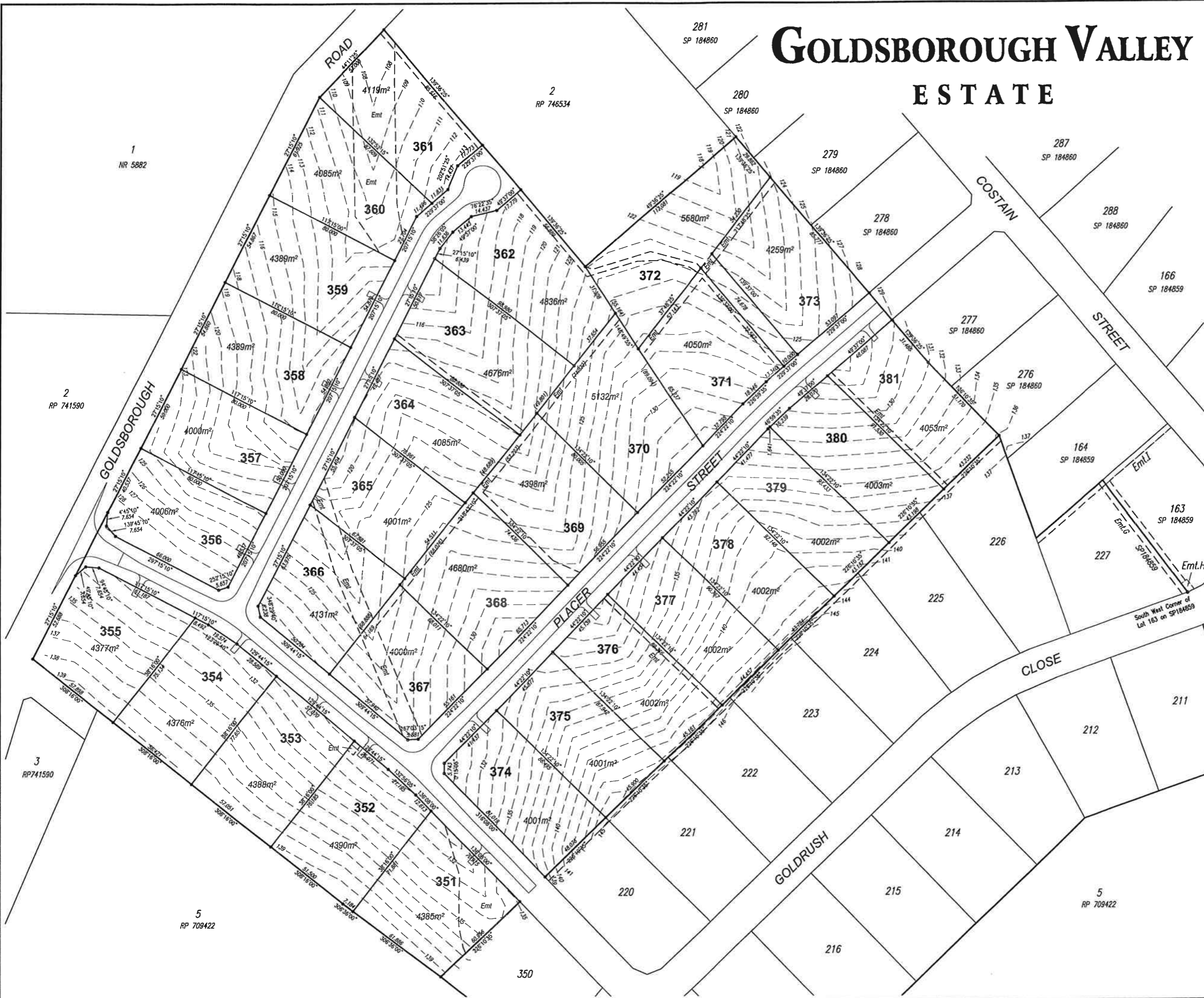


# GOLDSBOROUGH VALLEY ESTATE



- NOTES**
- This plan shows details of Proposed Allotments 351-381 on the Proposal Plan by C & B Consultants Pty Ltd Drawing No. 4392-170A which accompanied the Subdivision Application and was approved by Cairns City Council on the 27 of July 2006 subject to conditions.
  - The engineering drawings prepared by Bruce & Associates Consulting were approved by Cairns City Council on the 12th of September 2007.
  - The Metes and Bounds Description of the area of land being Proposed Allotments 351-381 is shown on Sheet 2.
  - Natural surface contours based on AHD datum at an interval of 1m are shown as:
    - 12.0 ---



## STAGE 15



SCALE 1:1000 IS APPLICABLE ONLY TO THE ORIGINAL SHEET SIZE (A1) (1:2000 @ A3)

**HYPHA PTY LTD**

**DISCLOSURE PLAN**  
**NATURAL SURFACE**  
**PROPOSED LOTS 351-381**  
**PLAN 1 OF 3 PLANS**

URBAN DESIGNERS  
 PLANNERS  
 SURVEYORS



Cairns Office  
 PO Box 1949 CAIRNS QLD 4870  
 Tel: (07) 4031 1336 Fax: (07) 4031 2942  
 cairns@cbgroup.com.au www.cbgroup.com.au  
 C&B Consultants Pty Ltd A.C.N. 056 511 096

SCALE 1:1000 DATE 4/9/07 DRAWING NO. 4392-199 ISSUE

SHEET SIZE A1		PROJECT MANAGER M. Stopford	
AMENDMENTS		COMPLETED KJP	
FM CHECKED		CAD REF 4392-199.DWG 660974.PJS	
DRAWING CHECKED		LEVEL DATUM AHD	
LOCAL AUTHORITY CAIRNS CITY COUNCIL		LEVEL ORIGIN PSM116774 RL125.016	