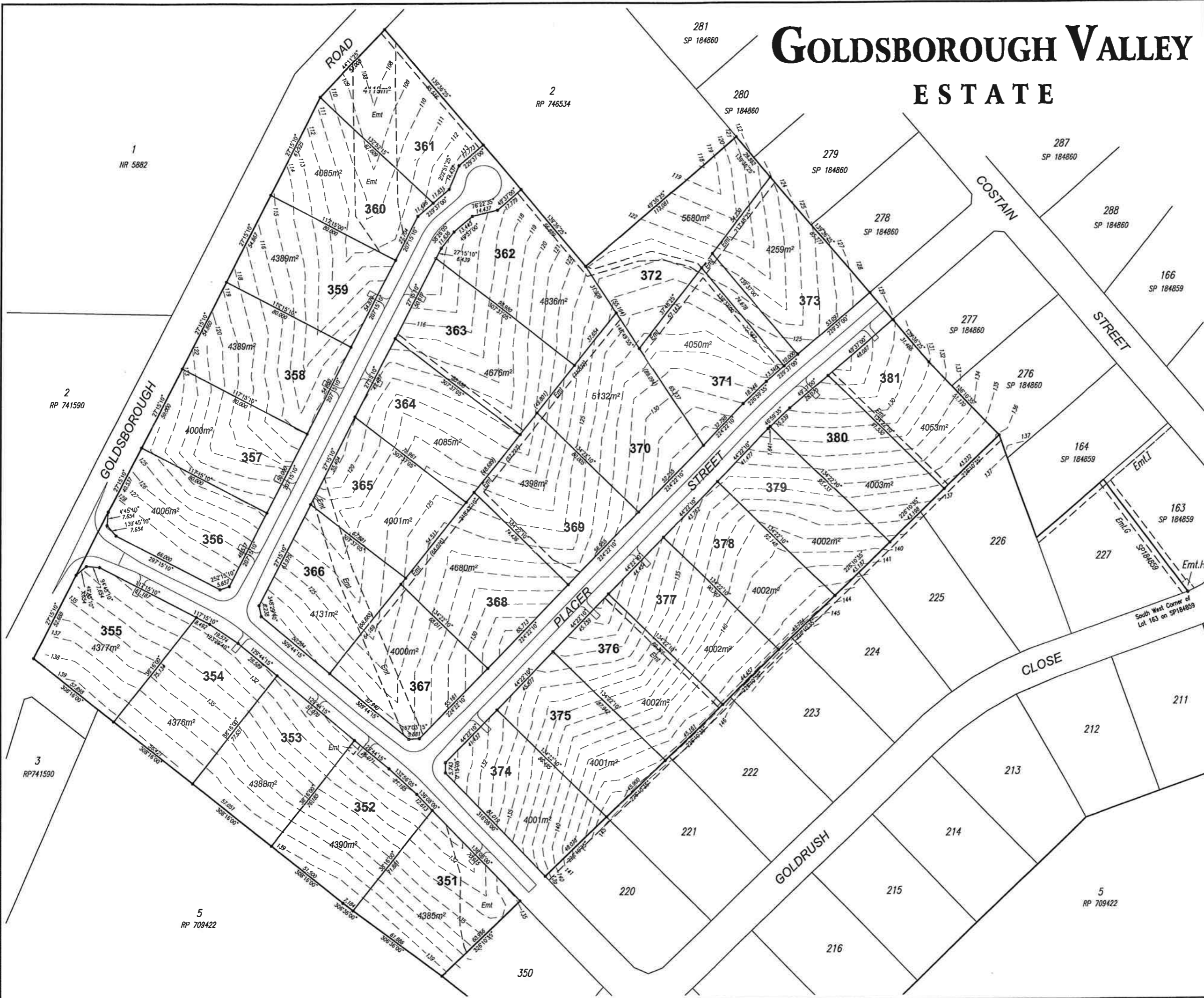


GOLDSBOROUGH VALLEY ESTATE



- NOTES**
- This plan shows details of Proposed Allotments 351-381 on the Proposal Plan by C & B Consultants Pty Ltd Drawing No. 4392-170'A which accompanied the Subdivision Application and was approved by Cairns City Council on the 27 of July 2006 subject to conditions.
 - The engineering drawings prepared by Bruce & Associates Consulting were approved by Cairns City Council on the 12th of September 2007.
 - The Metes and Bounds Description of the area of land being Proposed Allotments 351-381 is shown on Sheet 2.
 - Natural surface contours based on AHD datum at an interval of 1m are shown as:
 - 12.0 ---



STAGE 15

0 10 20 30 40 50
metres
SCALE 1:1000 IS APPLICABLE ONLY TO THE ORIGINAL SHEET SIZE (A1) (1:2000 @ A3)

HYPHA PTY LTD

DISCLOSURE PLAN
NATURAL SURFACE
PROPOSED LOTS 351-381
PLAN 1 OF 3 PLANS

URBAN DESIGNERS
PLANNERS
SURVEYORS



Cairns Office
PO Box 1940 CAIRNS QLD 4870
Tel: (07) 4051 1338 Fax: (07) 4051 2942
cairnsgroup@cairnsgroup.com.au www.cairnsgroup.com.au
C&B Consultants Pty Ltd A.C.N. 055 911 056

SCALE 1:1000	DATE 4/9/07	DRAWING NO. 4392-199	ISSUE
SHEET SIZE A1			
AMENDMENTS	PROJECT MANAGER M. Stopford		
	COMPILED KJP		
	CAD REF 4392-199.DWG		
	660974.P/S		
FM CHECKED	DRAFTING CHECKED	LEVEL DATUM AHD	
LOCAL AUTHORITY CAIRNS CITY COUNCIL		LEVEL ORIGIN PSM16774 RL125.016	

GOLDSBOROUGH VALLEY

ESTATE

LOT 351

From the SW corner of Lot 163 on SP184859 thence a bearing of 254°10'35" for a distance of 443.787m to the point of commencement thence a bearing of 136°08'00" for a distance of 70.915m Bearing of 226°10'35" for a distance of 60.956m Bearing of 306°36'00" for a distance of 61.886m Bearing of 38°16'00" for a distance of 71.881m To the point of commencement and containing an area of 4385m² more or less.

LOT 352

From the SW corner of Lot 163 on SP184859 thence a bearing of 260°10'43" for a distance of 477.505m to the point of commencement thence a bearing of 129°44'15" for a distance of 25.071m Bearing of 132°56'05" for a distance of 21.195m Bearing of 136°08'00" for a distance of 12.613m Bearing of 218°16'00" for a distance of 71.881m Bearing of 306°36'00" for a distance of 7.184m Bearing of 308°16'00" for a distance of 51.500m Bearing of 38°16'00" for a distance of 76.185m To the point of commencement and containing an area of 4390m² more or less.

LOT 353

From the SW corner of Lot 163 on SP184859 thence a bearing of 265°00'14" for a distance of 516.354m to the point of commencement thence a bearing of 129°44'15" for a distance of 57.070m Bearing of 218°16'00" for a distance of 76.185m Bearing of 308°16'00" for a distance of 57.051m Bearing of 38°16'00" for a distance of 77.651m To the point of commencement and containing an area of 4388m² more or less.

LOT 354

From the SW corner of Lot 163 on SP184859 thence a bearing of 268°46'22" for a distance of 560.378m to the point of commencement thence a bearing of 117°15'10" for a distance of 8.492m Bearing of 123°29'40" for a distance of 19.574m Bearing of 129°44'15" for a distance of 28.589m Bearing of 218°16'00" for a distance of 77.651m Bearing of 308°16'00" for a distance of 56.421m Bearing of 38°16'00" for a distance of 75.134m To the point of commencement and containing an area of 4376m² more or less.

LOT 355

From the SW corner of Lot 163 on SP184859 thence a bearing of 271°04'03" for a distance of 628.222m to the point of commencement thence a bearing of 49°45'10" for a distance of 7.654m Bearing of 94°45'10" for a distance of 7.654m Bearing of 117°15'10" for a distance of 61.187m Bearing of 218°16'00" for a distance of 75.134m Bearing of 308°16'00" for a distance of 57.898m Bearing of 27°15'10" for a distance of 52.688m To the point of commencement and containing an area of 4377m² more or less.

LOT 356

From the SW corner of Lot 163 on SP184859 thence a bearing of 275°07'39" for a distance of 522.204m to the point of commencement thence a bearing of 207°15'10" for a distance of 46.537m Bearing of 252°15'10" for a distance of 5.657m Bearing of 297°15'10" for a distance of 66.000m Bearing of 319°45'10" for a distance of 7.654m Bearing of 4°45'10" for a distance of 7.654m Bearing of 27°15'10" for a distance of 40.537m Bearing of 117°15'10" for a distance of 80.000m To the point of commencement and containing an area of 4006m² more or less.

LOT 357

From the SW corner of Lot 163 on SP184859 thence a bearing of 280°23'05" for a distance of 505.499m to the point of commencement thence a bearing of 207°15'10" for a distance of 50.000m Bearing of 297°15'10" for a distance of 80.000m Bearing of 27°15'10" for a distance of 50.000m Bearing of 117°15'10" for a distance of 80.000m To the point of commencement and containing an area of 4000m² more or less.

LOT 358

From the SW corner of Lot 163 on SP184859 thence a bearing of 286°30'20" for a distance of 492.388m to the point of commencement thence a bearing of 207°15'10" for a distance of 54.860m Bearing of 297°15'10" for a distance of 80.000m Bearing of 27°15'10" for a distance of 54.860m Bearing of 117°15'10" for a distance of 80.000m To the point of commencement and containing an area of 4389m² more or less.

LOT 359

From the SW corner of Lot 163 on SP184859 thence a bearing of 292°53'06" for a distance of 485.161m to the point of commencement thence a bearing of 207°15'10" for a distance of 54.870m Bearing of 297°15'10" for a distance of 80.000m Bearing of 27°15'10" for a distance of 54.867m Bearing of 117°15'00" for a distance of 80.000m To the point of commencement and containing an area of 4389m² more or less.

LOT 360

From the SW corner of Lot 163 on SP184859 thence a bearing of 297°25'06" for a distance of 479.380m to the point of commencement thence a bearing of 229°37'00" for a distance of 11.496m Bearing of 207°15'10" for a distance of 27.704m Bearing of 297°15'00" for a distance of 80.000m Bearing of 27°15'10" for a distance of 61.925m Bearing of 132°52'15" for a distance of 87.609m To the point of commencement and containing an area of 4085m² more or less.

LOT 361

From the SW corner of Lot 163 on SP184859 thence a bearing of 302°30'28" for a distance of 471.201m to the point of commencement thence a bearing of 229°37'00" for a distance of 17.773m Bearing of 202°51'25" for a distance of 14.437m Bearing of 229°37'00" for a distance of 11.831m Bearing of 312°52'15" for a distance of 87.609m Bearing of 44°11'25" for a distance of 53.008m Bearing of 139°36'25" for a distance of 85.516m To the point of commencement and containing an area of 4119m² more or less.

LOT 362

From the SW corner of Lot 163 on SP184859 thence a bearing of 294°05'49" for a distance of 464.456m to the point of commencement thence a bearing of 27°15'10" for a distance of 6.439m Bearing of 38°26'05" for a distance of 11.636m Bearing of 49°37'00" for a distance of 13.443m Bearing of 76°22'35" for a distance of 14.437m Bearing of 49°37'00" for a distance of 17.779m Bearing of 139°36'25" for a distance of 56.889m Bearing of 146°49'55" for a distance of 31.308m Bearing of 218°47'10" for a distance of 37.654m Bearing of 307°37'05" for a distance of 98.980m To the point of commencement and containing an area of 4836m² more or less.

LOT 363

From the SW corner of Lot 163 on SP184859 thence a bearing of 287°55'25" for a distance of 469.967m to the point of commencement thence a bearing of 27°15'10" for a distance of 50.617m Bearing of 127°37'05" for a distance of 98.980m Bearing of 218°47'10" for a distance of 49.801m Bearing of 307°37'05" for a distance of 88.858m To the point of commencement and containing an area of 4676m² more or less.

LOT 364

From the SW corner of Lot 163 on SP184859 thence a bearing of 282°05'26" for a distance of 480.477m to the point of commencement thence a bearing of 27°15'10" for a distance of 49.487m Bearing of 127°37'05" for a distance of 88.858m Bearing of 218°47'10" for a distance of 48.689m Bearing of 307°37'05" for a distance of 78.961m To the point of commencement and containing an area of 4085m² more or less.

LOT 365

From the SW corner of Lot 163 on SP184859 thence a bearing of 275°55'27" for a distance of 497.848m to the point of commencement thence a bearing of 27°15'10" for a distance of 55.404m Bearing of 127°37'05" for a distance of 78.961m Bearing of 218°47'10" for a distance of 54.511m Bearing of 307°37'05" for a distance of 67.881m To the point of commencement and containing an area of 4001m² more or less.

LOT 366

From the SW corner of Lot 163 on SP184859 thence a bearing of 264°50'28" for a distance of 486.544m to the point of commencement thence a bearing of 309°44'15" for a distance of 50.284m Bearing of 348°29'40" for a distance of 6.238m Bearing of 27°15'10" for a distance of 63.975m Bearing of 127°37'05" for a distance of 67.881m Bearing of 218°47'10" for a distance of 68.888m To the point of commencement and containing an area of 4131m² more or less.

LOT 367

From the SW corner of Lot 163 on SP184859 thence a bearing of 264°04'29" for a distance of 397.697m to the point of commencement thence a bearing of 224°22'10" for a distance of 55.161m Bearing of 267°03'15" for a distance of 5.881m Bearing of 309°44'15" for a distance of 57.940m Bearing of 38°47'10" for a distance of 64.469m Bearing of 134°22'10" for a distance of 68.011m To the point of commencement and containing an area of 4000m² more or less.

LOT 368

From the SW corner of Lot 163 on SP184859 thence a bearing of 270°58'11" for a distance of 349.670m to the point of commencement thence a bearing of 224°22'10" for a distance of 65.713m Bearing of 314°22'10" for a distance of 68.011m Bearing of 38°47'10" for a distance of 66.026m Bearing of 134°22'10" for a distance of 74.436m To the point of commencement and containing an area of 4680m² more or less.

LOT 369

From the SW corner of Lot 163 on SP184859 thence a bearing of 278°33'37" for a distance of 313.282m to the point of commencement thence a bearing of 224°22'10" for a distance of 56.955m Bearing of 314°22'10" for a distance of 74.436m Bearing of 38°47'10" for a distance of 57.227m Bearing of 134°22'10" for a distance of 80.005m To the point of commencement and containing an area of 4398m² more or less.

LOT 370

From the SW corner of Lot 163 on SP184859 thence a bearing of 287°05'07" for a distance of 285.866m to the point of commencement thence a bearing of 224°22'10" for a distance of 52.255m Bearing of 314°22'10" for a distance of 80.005m Bearing of 38°47'10" for a distance of 71.822m Bearing of 146°49'55" for a distance of 89.094m To the point of commencement and containing an area of 5132m² more or less.

LOT 371

From the SW corner of Lot 163 on SP184859 thence a bearing of 289°31'00" for a distance of 260.722m to the point of commencement thence a bearing of 229°37'00" for a distance of 13.340m Bearing of 226°59'35" for a distance of 18.146m Bearing of 224°22'10" for a distance of 32.798m Bearing of 326°49'55" for a distance of 65.237m Bearing of 37°48'25" for a distance of 57.143m Bearing of 139°37'00" for a distance of 72.587m To the point of commencement and containing an area of 4050m² more or less.

LOT 372

From the SW corner of Lot 163 on SP184859 thence a bearing of 301°36'25" for a distance of 257.456m to the point of commencement thence a bearing of 229°37'00" for a distance of 10.000m Bearing of 319°37'00" for a distance of 72.587m Bearing of 217°48'25" for a distance of 57.143m Bearing of 326°49'55" for a distance of 55.164m Bearing of 49°36'25" for a distance of 112.091m Bearing of 139°36'25" for a distance of 29.862m Bearing of 217°48'25" for a distance of 54.230m Bearing of 139°37'00" for a distance of 74.678m To the point of commencement and containing an area of 5580m² more or less.

LOT 373

From the SW corner of Lot 163 on SP184859 thence a bearing of 313°26'20" for a distance of 246.272m to the point of commencement thence a bearing of 229°37'00" for a distance of 53.097m Bearing of 319°37'00" for a distance of 74.678m Bearing of 37°48'25" for a distance of 54.230m Bearing of 139°36'25" for a distance of 85.777m To the point of commencement and containing an area of 4259m² more or less.

LOT 374

From the SW corner of Lot 163 on SP184859 thence a bearing of 246°27'47" for a distance of 396.374m to the point of commencement thence a bearing of 316°08'00" for a distance of 81.019m Bearing of 0°15'05" for a distance of 5.743m Bearing of 44°22'10" for a distance of 41.437m Bearing of 134°22'10" for a distance of 86.495m Bearing of 226°10'35" for a distance of 48.076m To the point of commencement and containing an area of 4001m² more or less.

LOT 375

From the SW corner of Lot 163 on SP184859 thence a bearing of 260°37'12" for a distance of 395.834m to the point of commencement thence a bearing of 44°22'10" for a distance of 45.877m Bearing of 134°22'10" for a distance of 87.942m Bearing of 226°10'35" for a distance of 45.900m Bearing of 314°22'10" for a distance of 86.495m To the point of commencement and containing an area of 4001m² more or less.

LOT 376

From the SW corner of Lot 163 on SP184859 thence a bearing of 264°56'36" for a distance of 359.880m to the point of commencement thence a bearing of 44°22'10" for a distance of 45.139m Bearing of 134°22'10" for a distance of 89.366m Bearing of 226°10'35" for a distance of 45.161m Bearing of 314°22'10" for a distance of 87.942m To the point of commencement and containing an area of 4002m² more or less.

LOT 377

From the SW corner of Lot 163 on SP184859 thence a bearing of 270°05'46" for a distance of 326.895m to the point of commencement thence a bearing of 44°22'10" for a distance of 44.434m Bearing of 134°22'10" for a distance of 90.767m Bearing of 226°10'35" for a distance of 44.457m Bearing of 314°22'10" for a distance of 89.366m To the point of commencement and containing an area of 4002m² more or less.

LOT 378

From the SW corner of Lot 163 on SP184859 thence a bearing of 276°14'01" for a distance of 297.581m to the point of commencement thence a bearing of 44°22'10" for a distance of 43.762m Bearing of 134°22'10" for a distance of 92.148m Bearing of 226°10'35" for a distance of 43.784m Bearing of 314°22'10" for a distance of 90.767m To the point of commencement and containing an area of 4002m² more or less.

LOT 379

From the SW corner of Lot 163 on SP184859 thence a bearing of 283°29'02" for a distance of 272.738m to the point of commencement thence a bearing of 44°22'10" for a distance of 41.477m Bearing of 46°59'35" for a distance of 1.641m Bearing of 134°22'10" for a distance of 93.433m Bearing of 226°10'35" for a distance of 43.137m Bearing of 314°22'10" for a distance of 92.148m To the point of commencement and containing an area of 4002m² more or less.

LOT 380

From the SW corner of Lot 163 on SP184859 thence a bearing of 291°52'34" for a distance of 253.252m to the point of commencement thence a bearing of 46°59'35" for a distance of 15.239m Bearing of 49°37'00" for a distance of 28.070m Bearing of 134°22'10" for a distance of 91.530m Bearing of 226°10'35" for a distance of 43.198m Bearing of 314°22'10" for a distance of 93.433m To the point of commencement and containing an area of 4003m² more or less.

LOT 381

From the SW corner of Lot 163 on SP184859 thence a bearing of 301°15'52" for a distance of 236.891m to the point of commencement thence a bearing of 49°37'00" for a distance of 48.087m Bearing of 139°36'25" for a distance of 31.486m Bearing of 226°10'35" for a distance of 43.232m Bearing of 314°22'10" for a distance of 91.530m To the point of commencement and containing an area of 4053m² more or less.

NOTES

- This plan shows details of Proposed Allotments 351-381 on the Proposal Plan by C & B Consultants Pty Ltd Drawing No. 4392-170A which accompanied the Subdivision Application and was approved by Cairns City Council on the 27 of July 2006 subject to conditions.
- The engineering drawings prepared by Bruce & Associates Consulting were approved by Cairns City Council on the 12th of September 2007.
- The Metes and Bounds Description of the area of land being Proposed Allotments 351-381 is shown on this sheet.
- The Metes and Bounds Description of the area of land being Proposed Allotments 351-381 described as Lot 3 on RP746534, Parish of Grafton, County of Nares and situated off Goldsborough Road, Goldsborough Valley.

STAGE 15

HYPHA PTY LTD

DISCLOSURE PLAN
METES & BOUNDS
PROPOSED LOTS 351-381
PLAN 2 OF 3 PLANS

URBAN DESIGNERS
 PLANNERS
 SURVEYORS



Cairns Office
 PO Box 1946 CAIRNS QLD 4850
 Tel: (07) 4031 1336 Fax: (07) 4031 2942
 cairns@hypha.com.au www.hypha.com.au
 C&B Consultants Pty Ltd A.C.N. 055 811 099

SCALE	N/A	DATE	4/9/07	DRAWING NO.	4392-200	ISSUE
SHEET SIZE	A1					
AMENDMENTS						PROJECT MANAGER M. Stopford
						COMPILED KJP
						CAD REF 4392-200.DWG 660974.PIS
PM CHECKED						
DRAFTING CHECKED						
LOCAL AUTHORITY						CAIRNS CITY COUNCIL